

MiniBeacon Plus User Manual

Version: V1.0



BeaconSET+



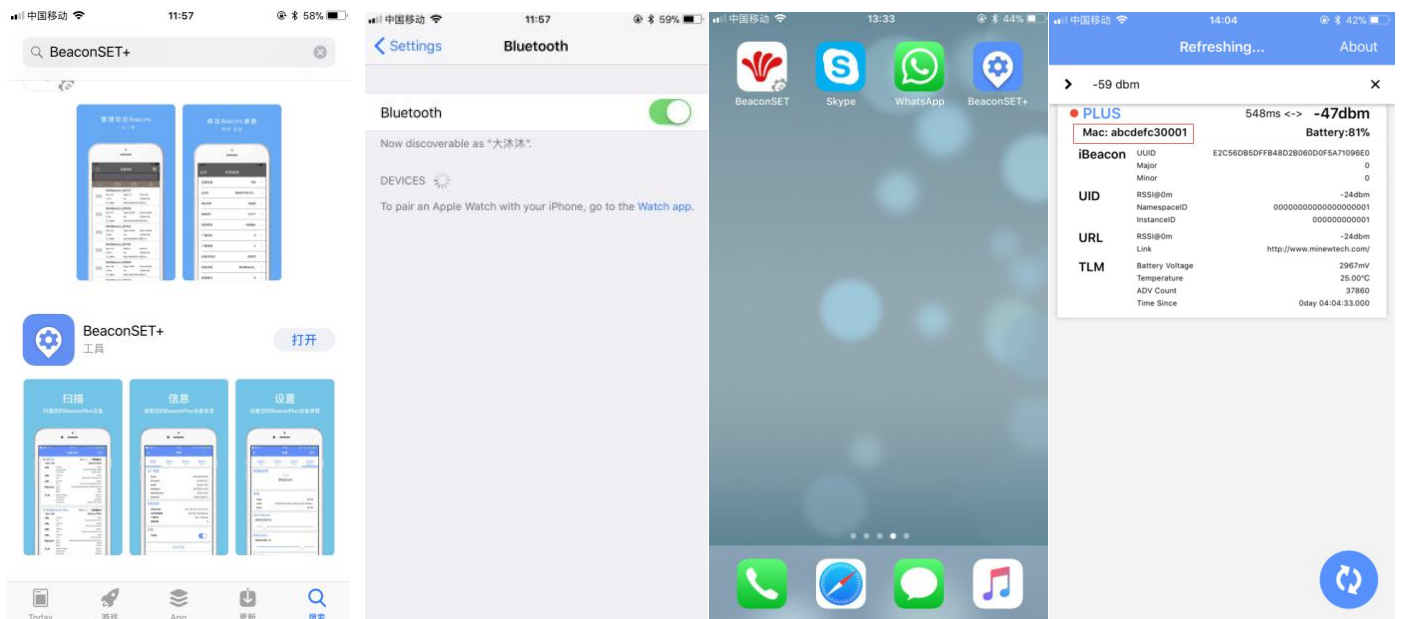
I. Activate the device

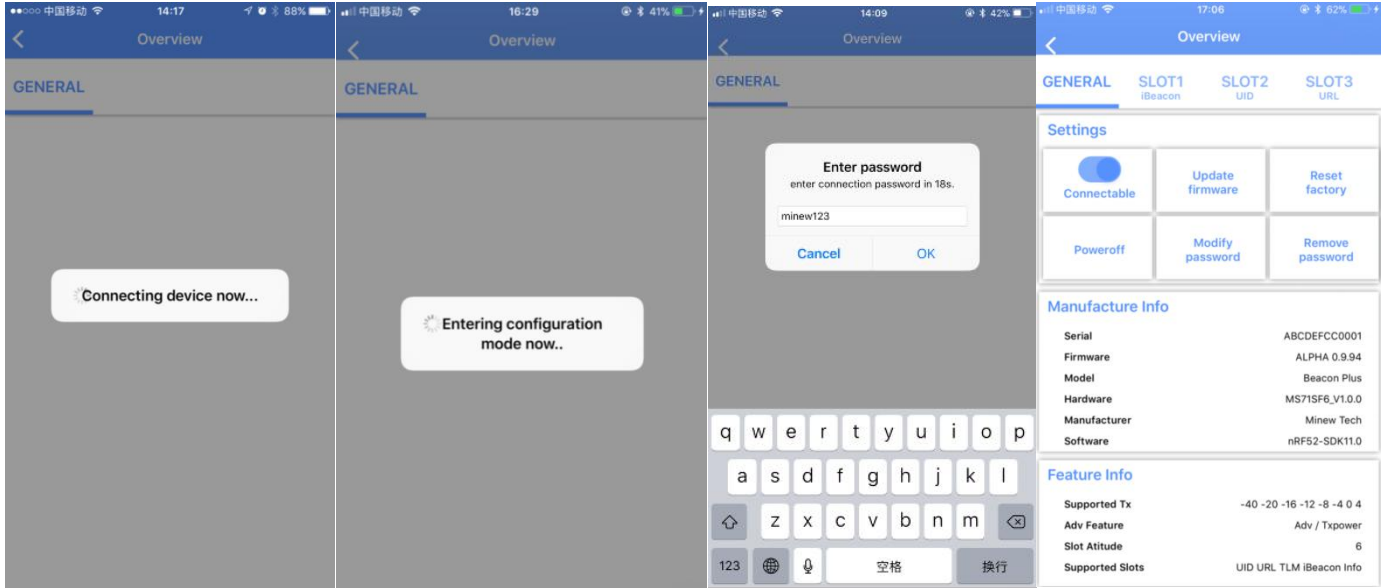
Turn on: Press the button for 3 seconds, blue led will keep lighting 5 seconds

Turn off: Press the button for 3 seconds, blue led will flash light 5 times

II. Start the configuration APP (Name: BeaconSET+)

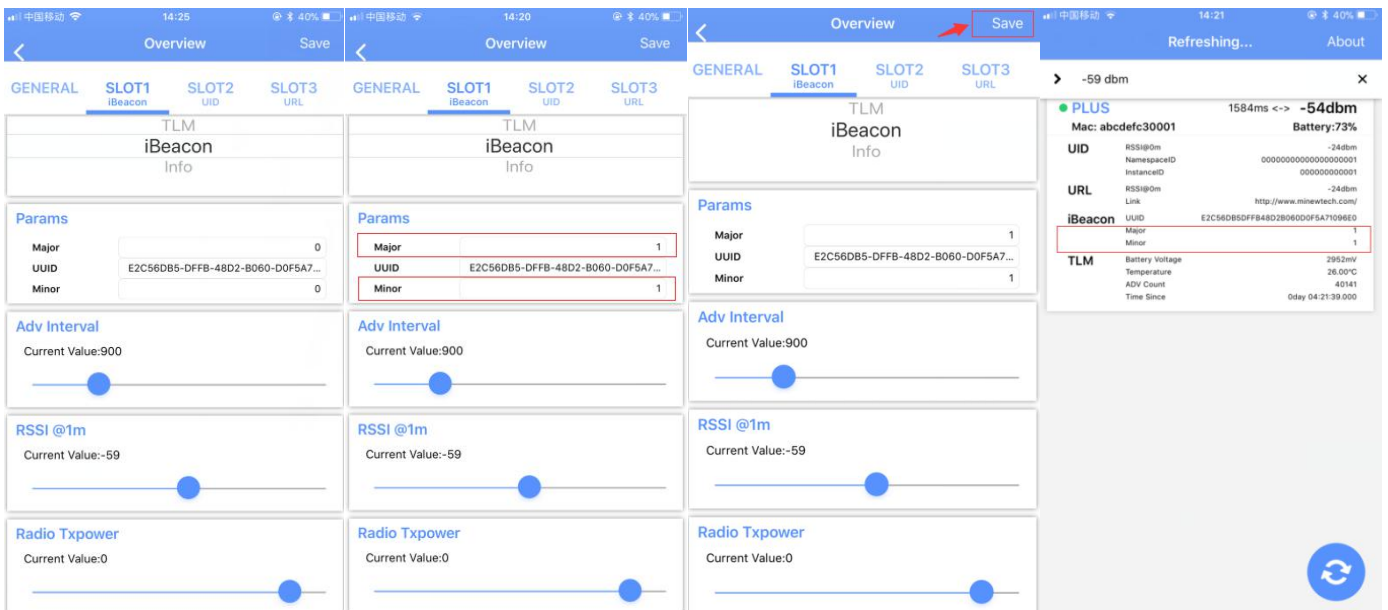
1. Download the APP “ BeaconSET+ ” from App store or Google play
2. Turn on “ Bluetooth ” in your mobile device
3. Start “BeaconSET+” configuration app
4. Make sure the device has been turned on
5. Identify the device by unique MAC address
6. Connect the device
7. Put the password “minew123” when connect the device, then show some information of manufacturer and feature.



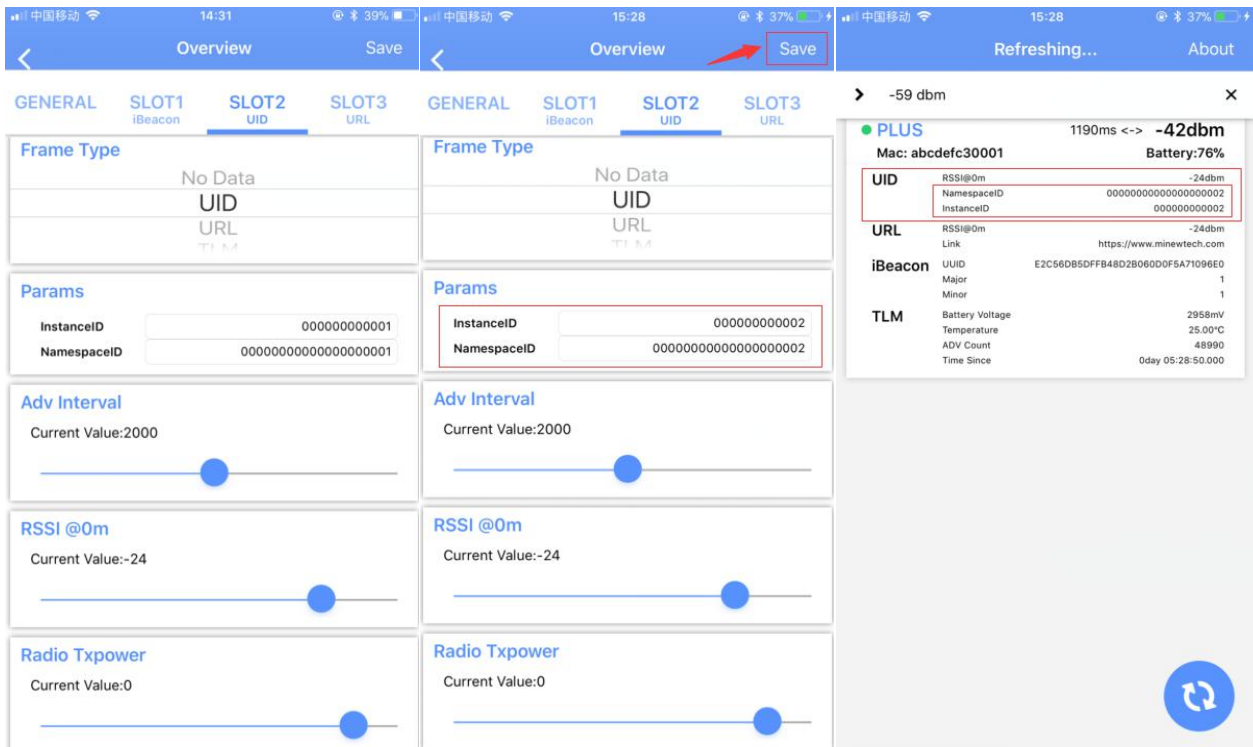


III. Configure the SLOTS (iBeacon, UID, URL, TLM)

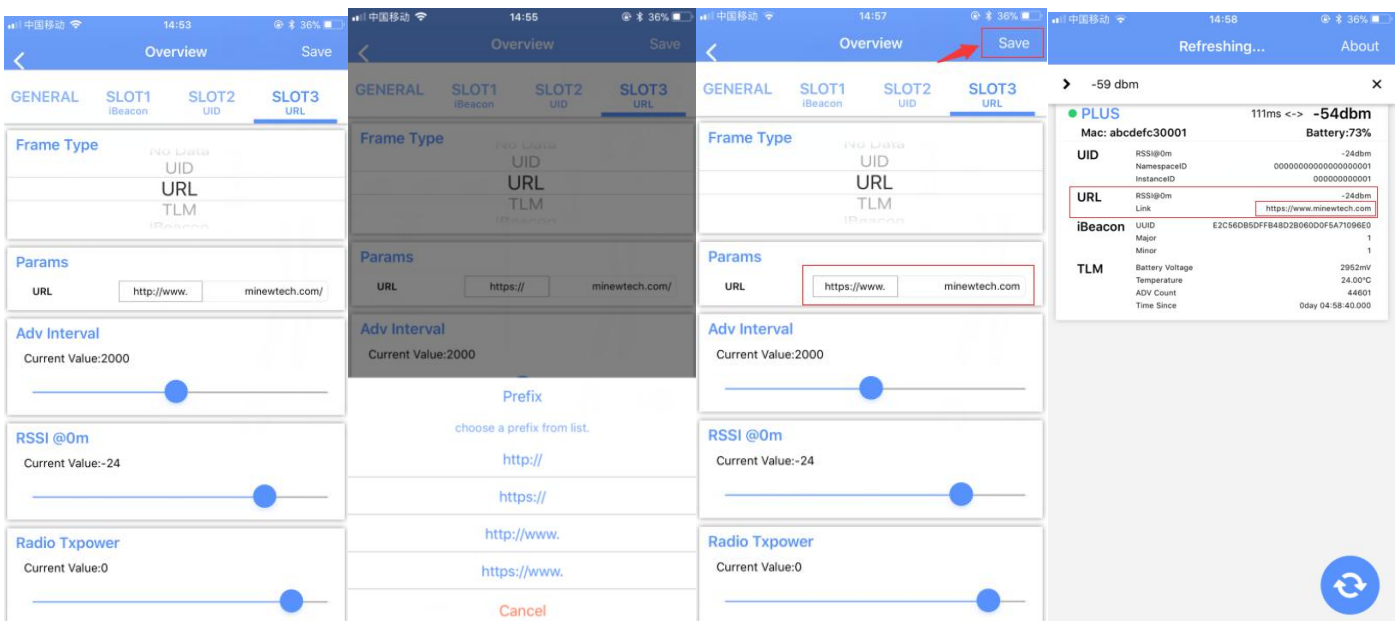
1. Click the SLOT1, choose iBeacon, you can setup the UUID, Major, Minor, Tx Power values, then remember to click the Save button. Here give an example of changing the major and minor values of the device.



2. Click the SLOT2, choose UID, you can setup the UID, then remember to click the Save button

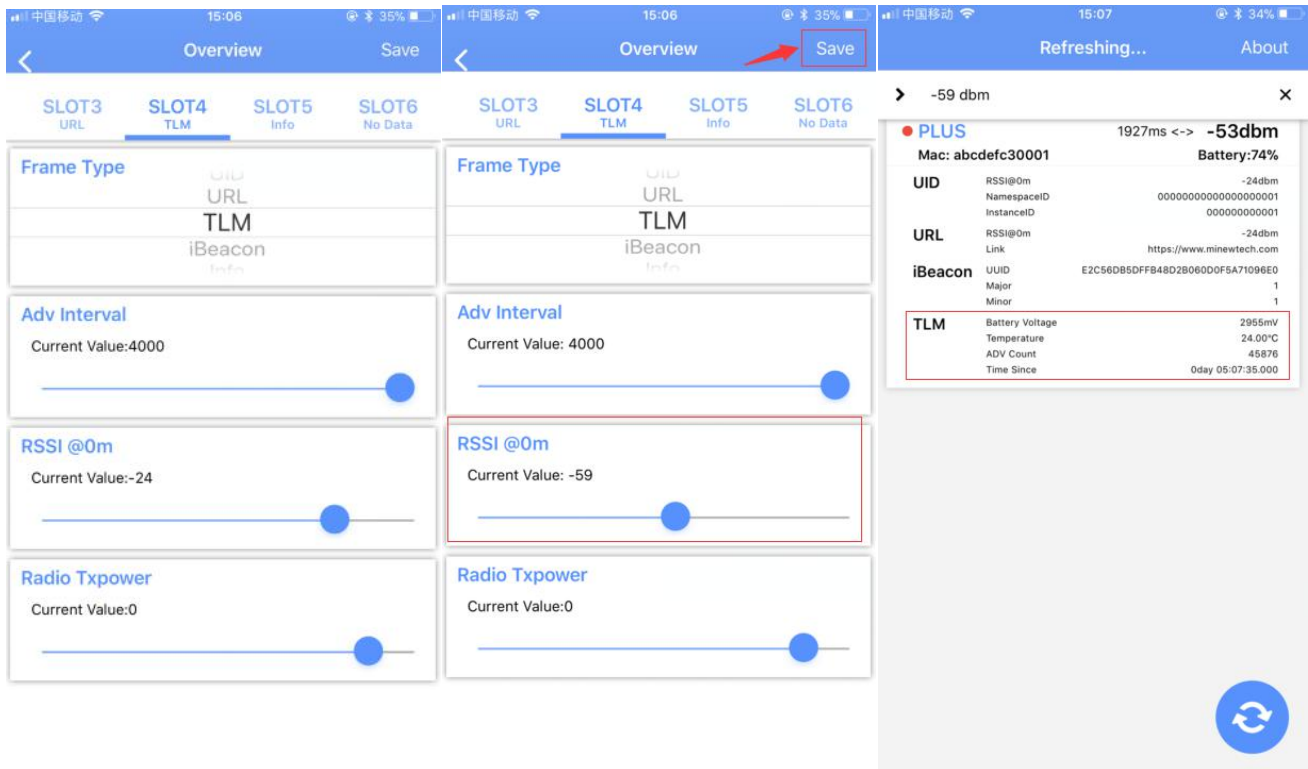


3. Click the SLOT3, choose URL, The URL domains selections shows in the second photos, start with <http://>, <https://>, <http://www.>, <https://www.>, you can setup the URL like: <https://www.minewtech.com>, then remember to click the Save button. Google official recommended the URL domains starts with https service.



4. Click the SLOT4, choose TLM, you can setup the TLM, then remember to click the Save button, please pay attention TLM can only setup one slot (max) for one device.

TLM can show the battery voltage of the device by mv (unit) and physical temperature of the device.



The screenshot displays the app's configuration interface for SLOT4, which is set to TLM. The interface includes several adjustable parameters:

- Frame Type:** TLM (selected), iBeacon (Info)
- Adv Interval:** Current Value: 4000
- RSSI @0m:** Current Value: -24
- Radio Txpower:** Current Value: 0

A red arrow points to the 'Save' button in the top right corner of the configuration screen. To the right, a detailed view of the TLM data is shown, including:

- PLUS:** 1927ms <-> -53dbm
- Mac:** abcdefc30001
- Battery:** 74%
- UID:** RSSI@0m: -24dbm, NamespaceID: 00000000000000000001, InstanceID: 000000000001
- URL:** RSSI@0m: -24dbm, Link: https://www.minewtech.com
- iBeacon:** UUID: E2C56DB85DFB48D2B060D0F5A71096E0, Major: 1, Minor: 1
- TLM:** Battery Voltage: 2955mV, Temperature: 24.00°C, ADV Count: 45876, Time Since: 0day 05:07:35.000

III. Default Settings

1. Slot Types

- iBeacon
- UID
- URL
- TLM

1.1 It can support broadcasting 6 slots (max) simultaneously. So you can setup 6 slots all of URL or 6 slots all of iBeacon. Or 3 slots of URL or 3 slots of iBeacon, you can DIY it, however, TLM only can setup one slot (max) .

2. Broadcasting Interval Range

2.1 From 100ms to 5s.

3. Transmission Power Level

3.1 -40dBm, -20dBm, -16dBm, -12dBm, -8dBm, -4dBm, 0dBm, 4dBm

Transmission Power Level	Output Power	Reference Distance (Maximum)
0	-40 dBm	1-2 meters
1	-20 dBm	7 meters
2	-16 dBm	10 meters
3	-12 dBm	12 meters
4	-8 dBm	22 meters
5	-4 dBm	27 meters
6	0 dBm	90 meters
7	+ 4 dBm	>100 meters

4. Default settings for each Slot

	Broadcasting Interval	Tx Power	RSSI value
iBeacon	900ms	0dBm	(-59)dBm
UID	2000ms	0dBm	(-24)dBm
URL	2000ms	0dBm	(-24)dBm
TLM	4000ms	0dBm	(-24)dBm

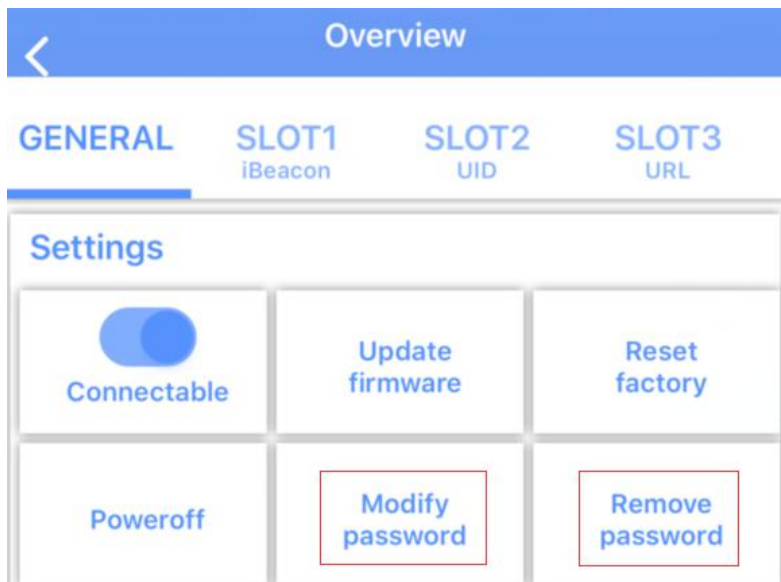
5. Deployment Notes

- 5.1 The broadcasting interval and transmission power level can be changed to increase battery life or decrease battery life.
- 5.2 The distance listed above is only a reference; the real distance depends on the physical environment.
- 5.3 Unique ON/OFF capabilities can be used to turn down the broadcasting when not in use and consequently keep the battery fresh many years.

6. Modify password and Remove password

6.1 Modify password, new password only allowed setup by 8 characters. password can be remembered when connect it again

6.2 Remove password, when connect device with app, so don't need enter password, it will connect directly.

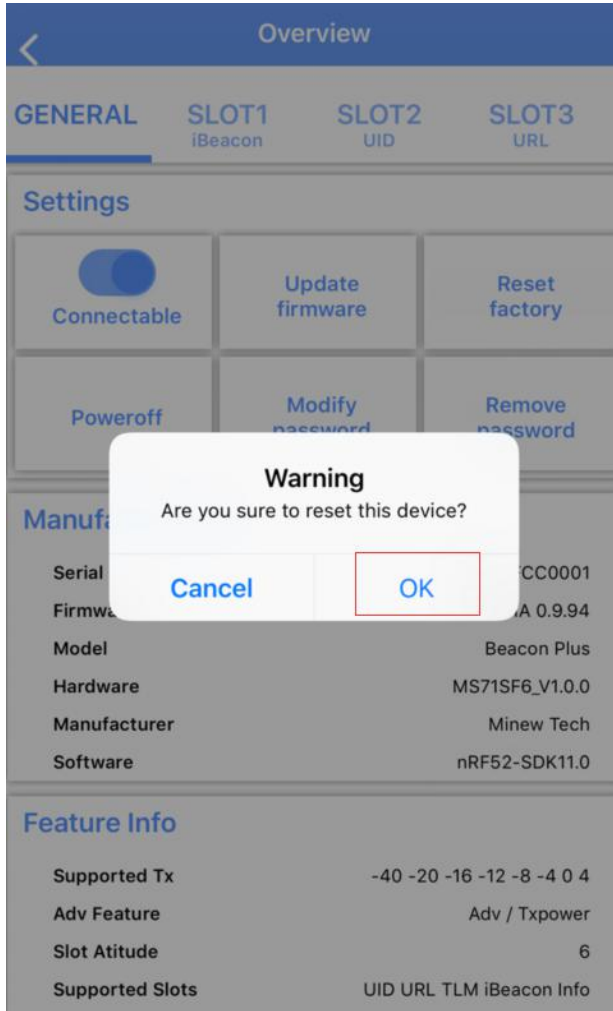


7. LED flash scenario

Device wake up	LED will keep lighting for 0.6 seconds
Device turn on	LED will keep lighting for 5 seconds
Device turn off	LED will flash light 5 times every 400 seconds
Device connect bluetooth	LED will flash light 2 times
Device disconnect bluetooth	LED will flash light 3 times
Device upgrade through OTA	LED will keep lighting until finish upgrade

IV. Device factory Reset

YES or No, Depends on your choice :)



IV. Device supports OTA

1. Click Update Firmware, then select the upgrade files for OTA upgrading automatically.
2. OTA process shows below:

Preparing...



Dfu Process Started



Dfu Completed



3. After finishing upgrade, connect the device again to check if upgrade the firmware version correctly.

Firmware Version

ALPHA 0.9.7

4. OTA upgrade conditions

4.1 Please do not OTA upgrade your own firmware in Minew standard firmware device.

4.2 Minew will not provide upgrade files if any updates about our standard firmware.

4.3 More questions, please ask your contact person in Minew ^.^